

Plan 3305



This ranch home is designed to be fully handicap accessible on the first floor, qualifying for type 'B' ADA. This home features 2 bedrooms and 1 bath on the main floor, with a combined living and dining room that opens onto a roomy kitchen, all in 1,070 square feet. Also included is a large front porch, and an attached 2 car garage.

BLUE STONE
design group

thebluestonedesigngroup.com

Plan 3305

Cottage Series

Ranch Design
1,070 finished square feet
Type 'B' ADA
9' Partial Basement
2 bedrooms
1 baths
2 Car Alley Garage

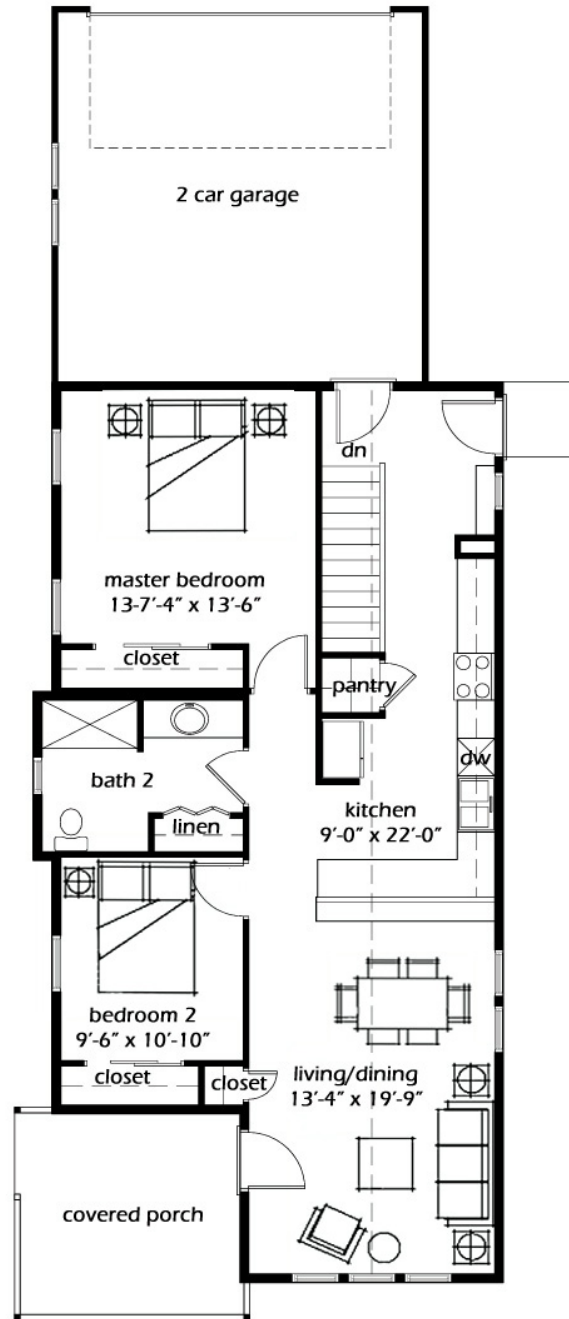
Overall Dimensions
26' x 48'

Design Features

Large Front Porch
Living and Dining Room
Vaulted Ceiling in Main Living Areas
Living in Place Design
All Interior Doorways 2'-10"
3'-6" Wide Hallways
Basement Construction
Private Master Suite

Energy Features

2x6 Construction
Small Footprint
Simple Construction
90% Efficient Furnace
Attic Fan
Energy Truss Design



Main Level
1,070 sq. ft.

Preliminary

BLUE STONE
design group

thebluestonedesigngroup.com